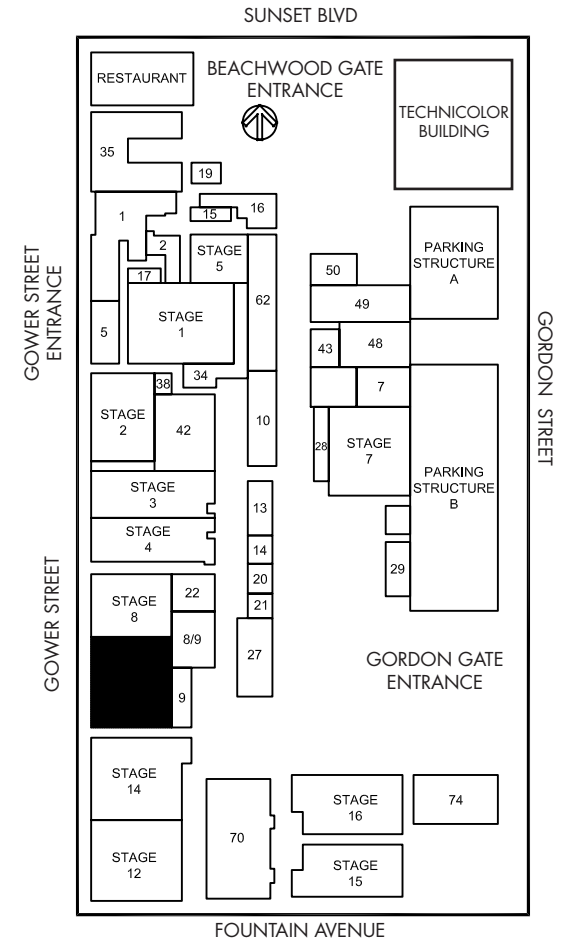
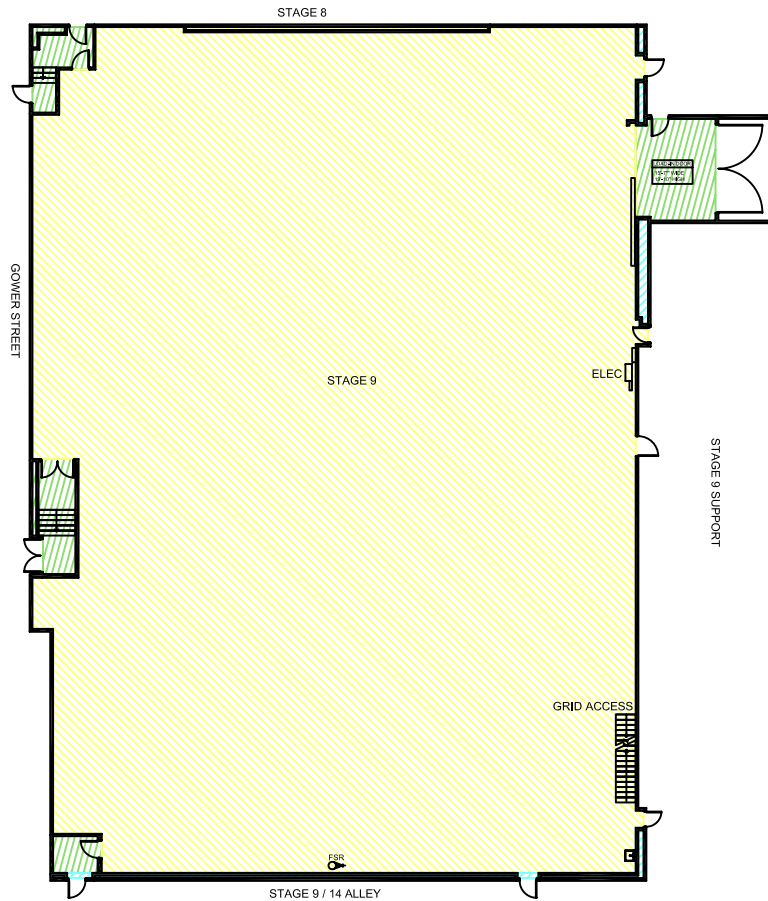


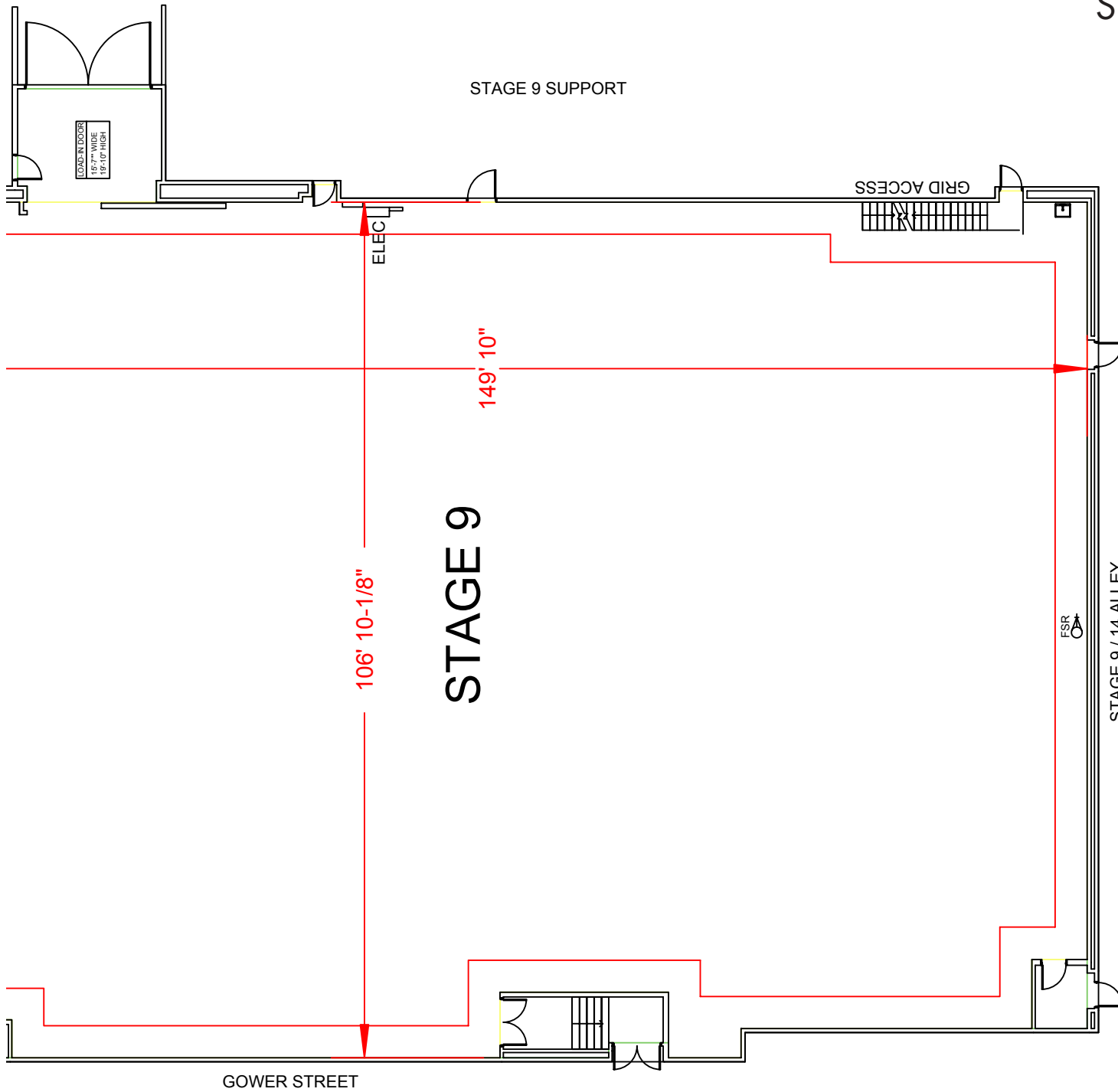
SUNSET GOWER STUDIOS

Stage 9



Width	Length	Height (Perms)	Total Stage Square Footage	Floor Type	Door (WxH)	Gross Weight Limit
106'7"	149'10"	34'8"	16,275	Wood	15'5" x 19'11"	10,000 Lbs.

Sunset Gower Studios



Stage Specifications: Stage 9

Sunset Gower Studios

Stage Specifications - (Dimensions Include 4' Fire Lane)

Width – 106' 7"

Length – 149' 10"

Height (Perms) – 34' 8"

Total Square Footage – 16275

Floor Type – Wood

Elephant Door (W X H) – 15' 5" X 19' 11"

Gross Weight Limits - 10,000 lbs (No Load)

Support Space- (Available On Stage)

Dressing Rooms, Wardrobe, and Hair + Make Up rooms are available in adjacent buildings

Heavy Equipment – (Authorized Lifts)

32' Scissor – 3246ES

30electric – lightweight JLG boom lift

3k forklift

Electric Service

Production Power - 120/208 800 Amp Per Phase Bus Bar, 4800 Amp Total Standard. Additional 2400 Amps Available

240 Volts - No

480 Volts - No

Tech Power - Available

Power In Grid – Available

HVAC

(2) 33 Ton (Nominal) Cooling Only Package Unit

33 Ton Cooling / Heat Package Unit

Redlight Control - Yes

Ventilation - Yes

Heating – Yes

Stage Extras

Hose Bib - No

Gas - No

Drain - Yes

Compressed Air - No

Wireless Internet – Available

Phone – Available

Fax – Available