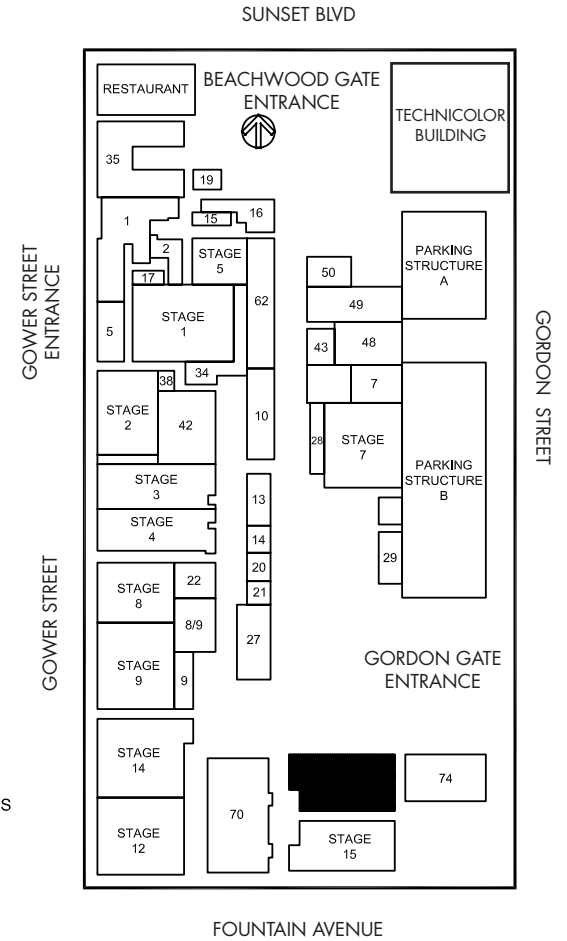
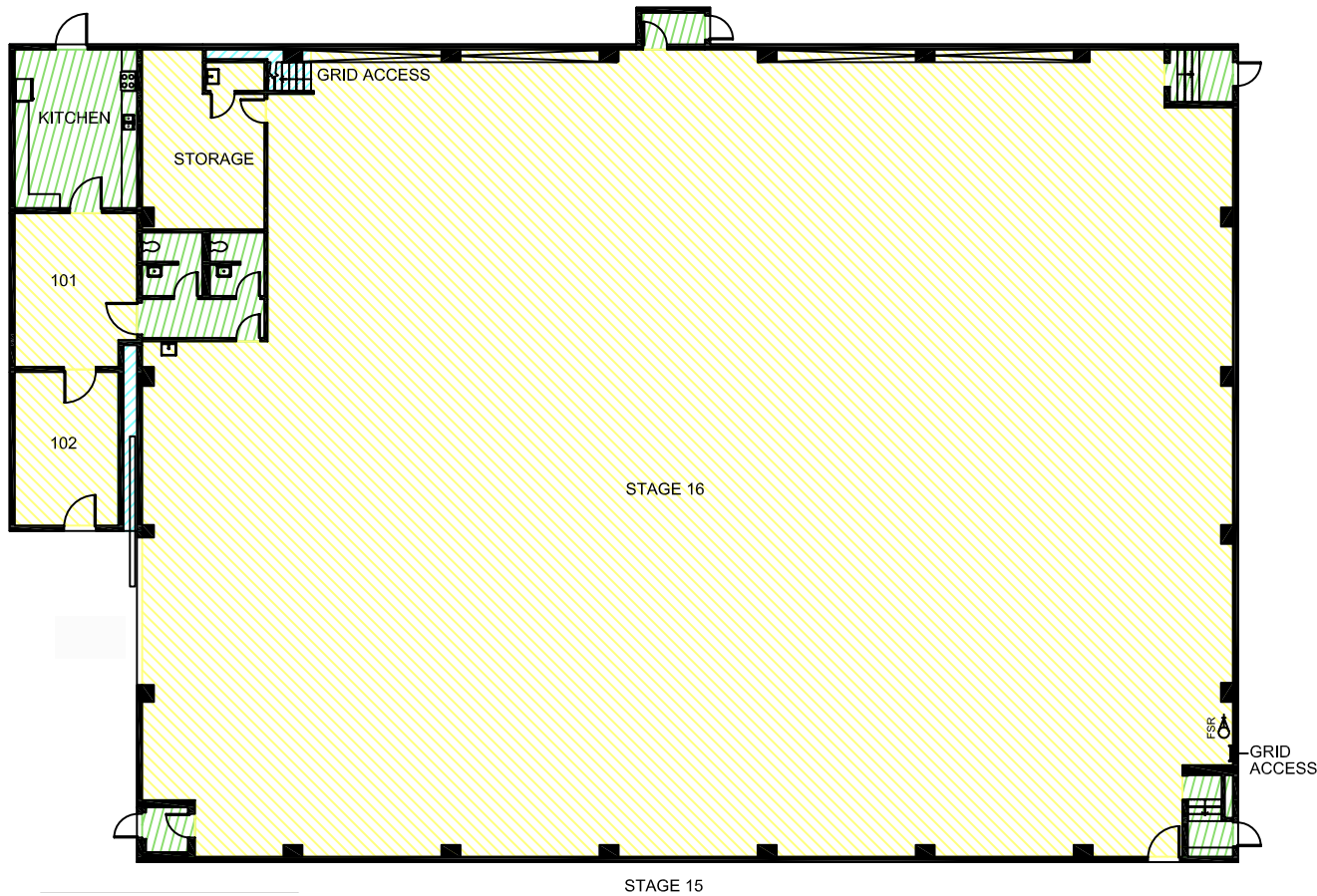
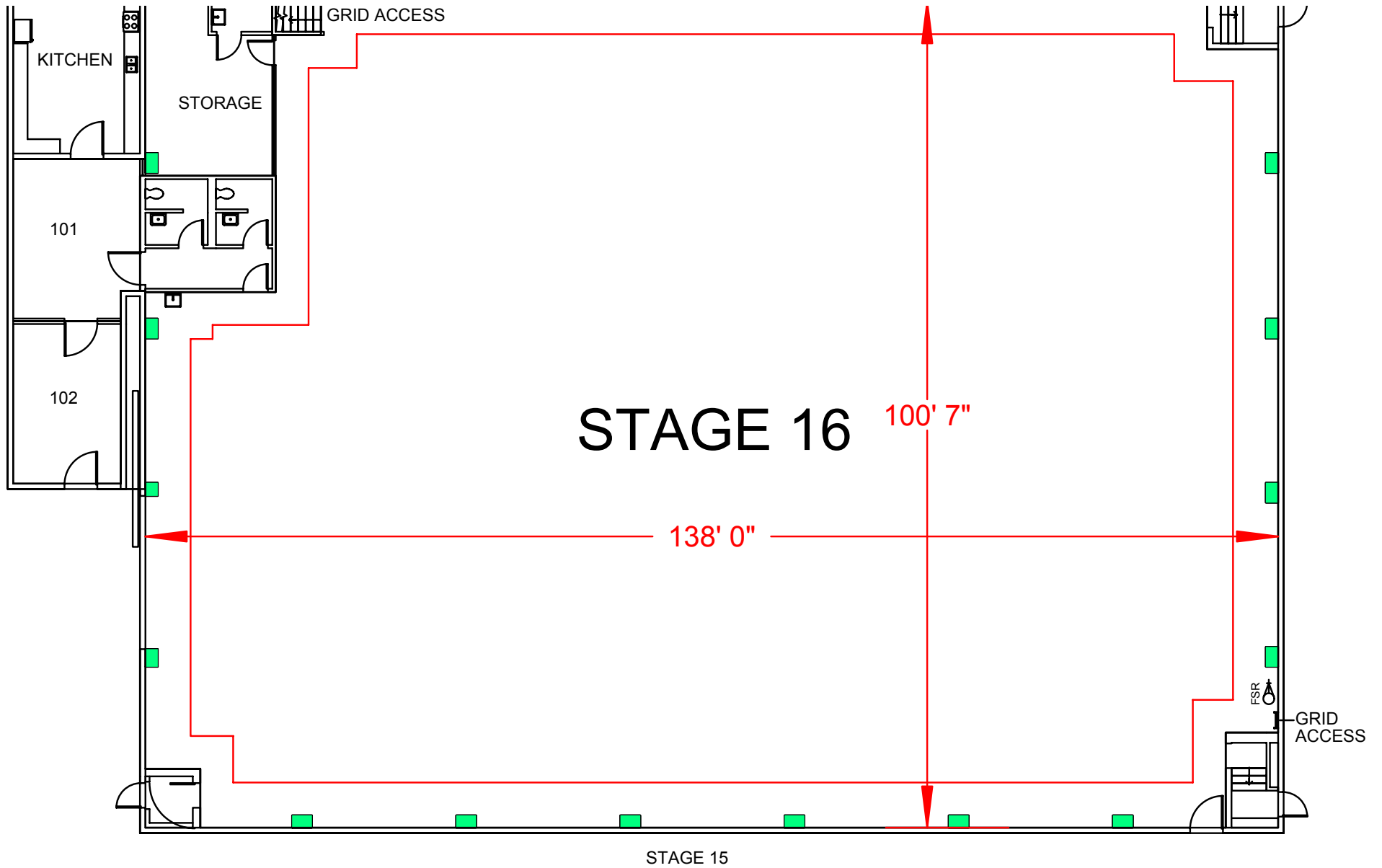


# SUNSET GOWER STUDIOS

## Stage 16



Width	Length	Height (Perms)	Total Stage Square Footage	Floor Type	Door (WxH)	Gross Weight Limit
102'2"	138'	35'	14,143	Concrete	18'8" x 20'	No Limit



# Stage Specifications: Stage 16

Sunset Gower Studios

---

## **Stage Specifications - (Dimensions Include 4' Fire Lane)**

Width – 102' 2"

Length – 138'

Height (Perms) – 35'

Total Square Footage – 14143

Floor Type – Concrete

Elephant Door (W X H) – 18' 8" X 20'

Gross Weight Limits - Unlimited

\*NOTE\* Stage 16 connected to Stage 15 via one pass-thru standard double door

## **Support Space- (Available On Stage)**

Offices – 3

Kitchen on stage with fridge, stove.

Dressing Rooms, Wardrobe, and Hair + Make Up rooms are available in adjacent buildings

## **Heavy Equipment – (Authorized Lifts)**

Unlimited

## **Electric Service**

Production Power - 120/208 800 Amp Per Phase Bus Bar, 4800 Amp Total Standard.

240 Volts - No

480 Volts - No

Tech Power - Available

Power In Grid - Available

## **HVAC**

HVAC- (1) 33 Ton Cooling / Heat Package Unit

(2) 33 Ton Cooling Only Package Unit

Redlight Control - Yes

Ventilation - Yes

Heating - Yes

## **Stage Extras**

Hose Bib - No

Gas - No

Drain - Yes

Compressed Air - No

Wireless Internet – Available

Phone – Available

Fax – Available