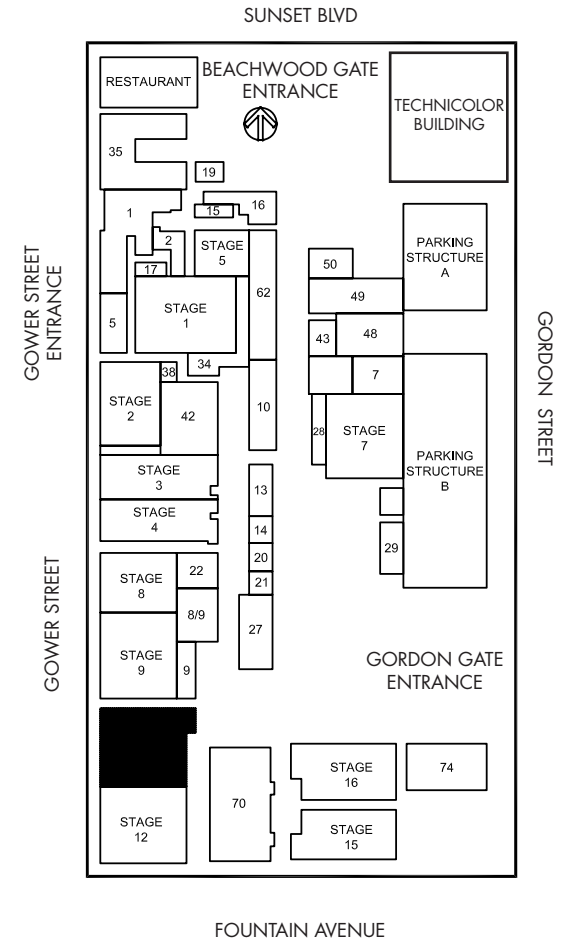
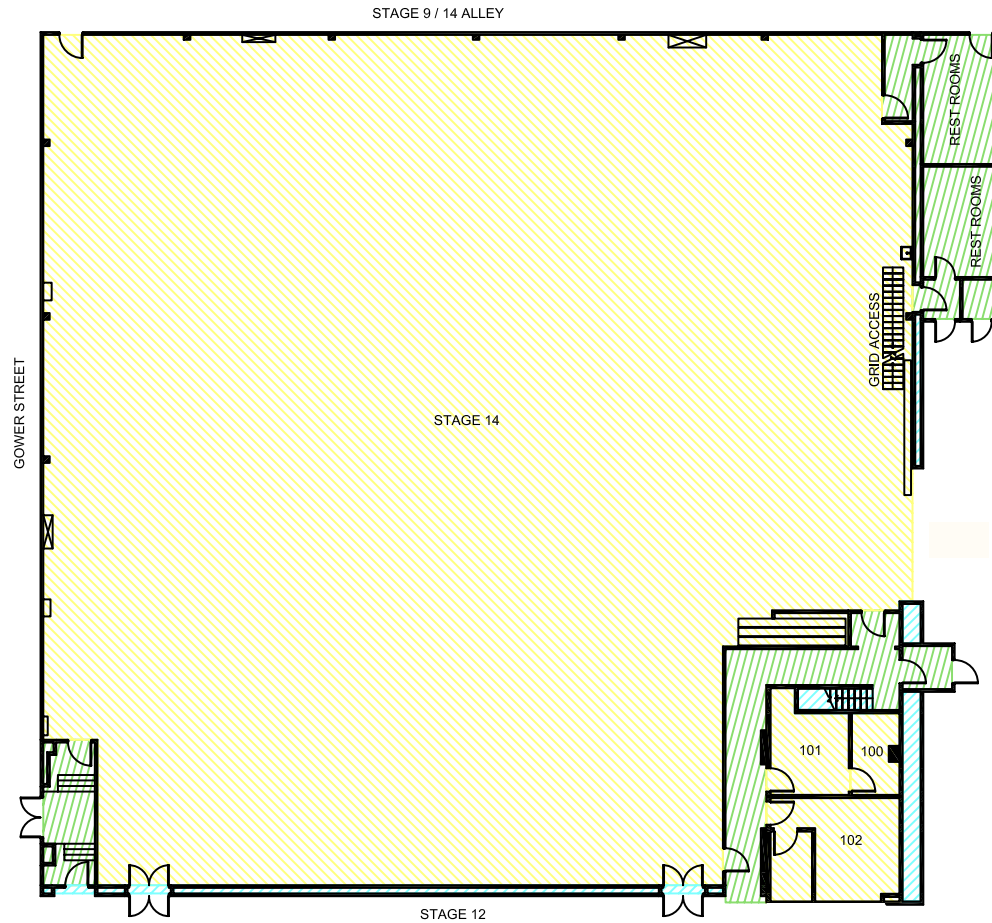
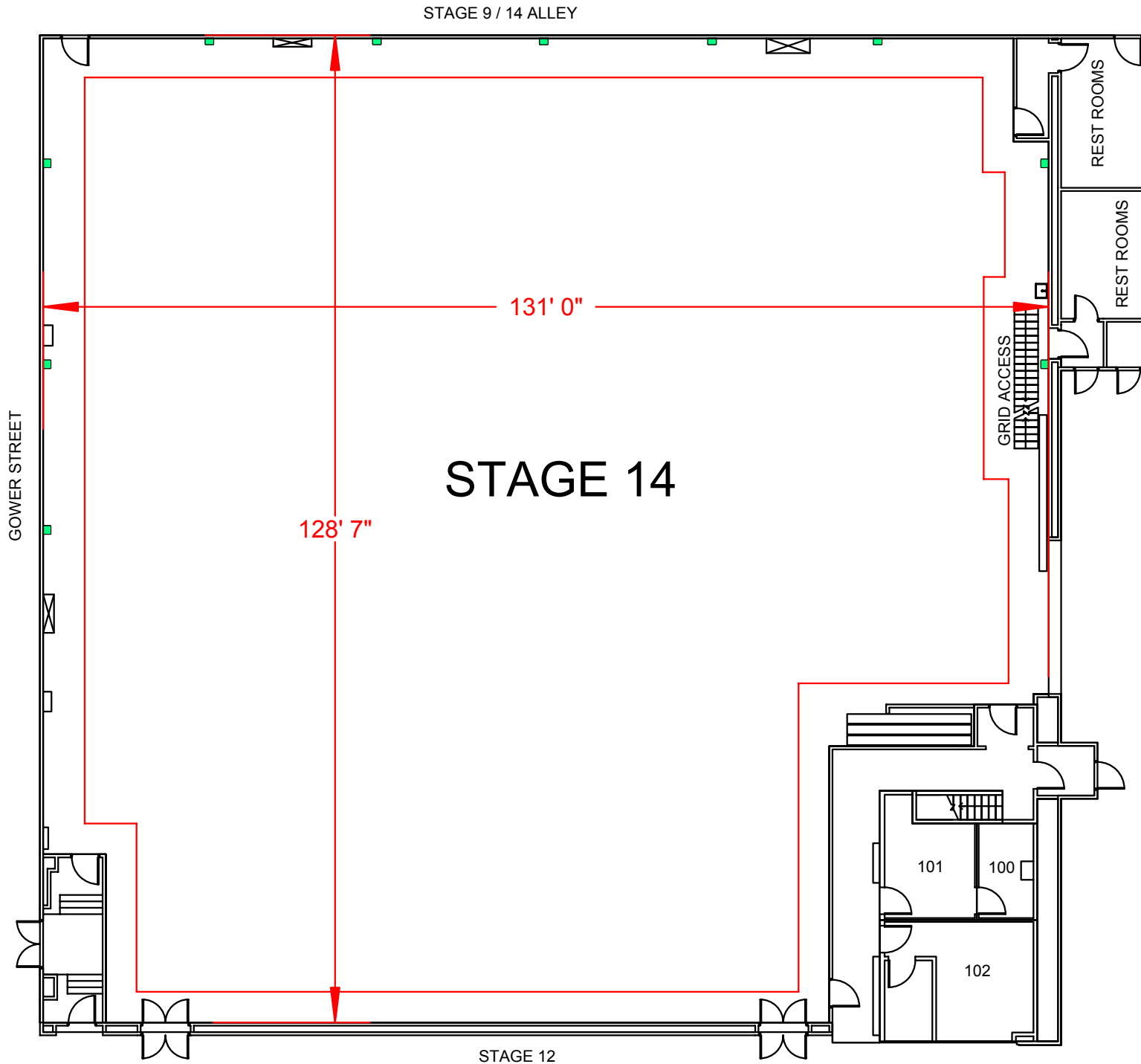


SUNSET GOWER STUDIOS

Stage 14



Width	Length	Height (Perms)	Total Stage Square Footage	Floor Type	Door (WxH)	Gross Weight Limit
131'	128'2"	35'4"	17,028	Wood	17'9" x 20'	10,000 Lbs.



Stage Specifications: Stage 14

Sunset Gower Studios

Stage Specifications - (Dimensions Include 4' Fire Lane)

Width – 131'
Length – 128' 2"
Height (Perms) – 35' 4"
Total Square Footage – 17028
Floor Type – Wood
Elephant Door (W X H) – 17' 9" X 20'
Gross Weight Limits - 10,000 lbs (No Load)
NOTE Stage 14 connected to Stage 12 via two pass-thru standard double doors

Support Space- (Available On Stage)

Offices – 3
Dressing Rooms, Wardrobe, and Hair + Make Up rooms are available in adjacent buildings

Heavy Equipment – (Authorized Lifts)

32' Scissor – 3246ES
30electric – lightweight JLG boom lift
3k forklift

Electric Service

Production Power - 120/208 800 Amp Per Phase Bus Bar, 4800 Amp Total Standard; Additional 2400 amp service available
240 Volts - No
480 Volts - No
Tech Power - Available
Power In Grid - Available

HVAC

HVAC (3) 30 Ton Cooling / Heat Package Unit
(2) 15 Ton Cooling/Heat Package Units
Redlight Control - Yes
Ventilation - Yes
Heating - Yes

Stage Extras

Hose Bib - No
Gas - No
Drain - Yes
Compressed Air - No
Wireless Internet – Available
Phone – Available
Fax – Available