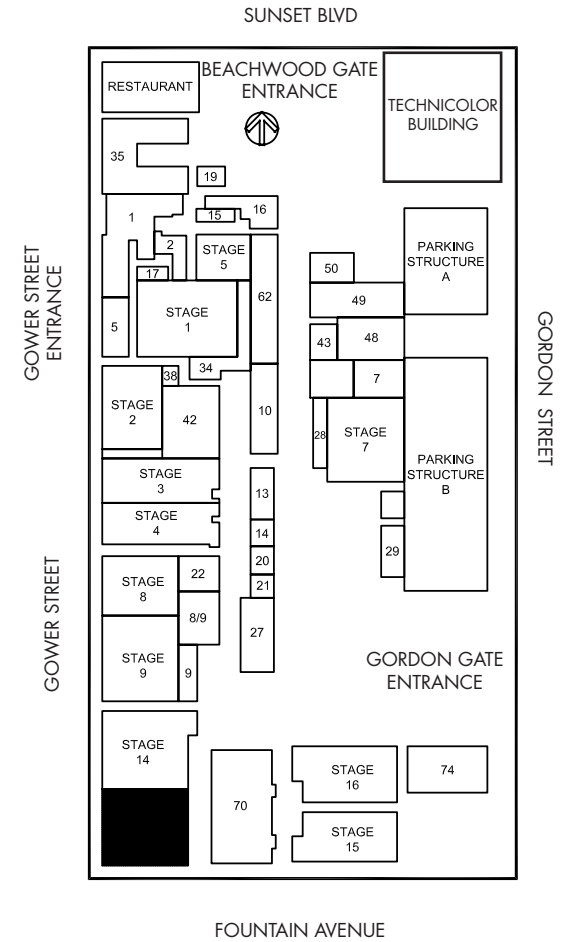
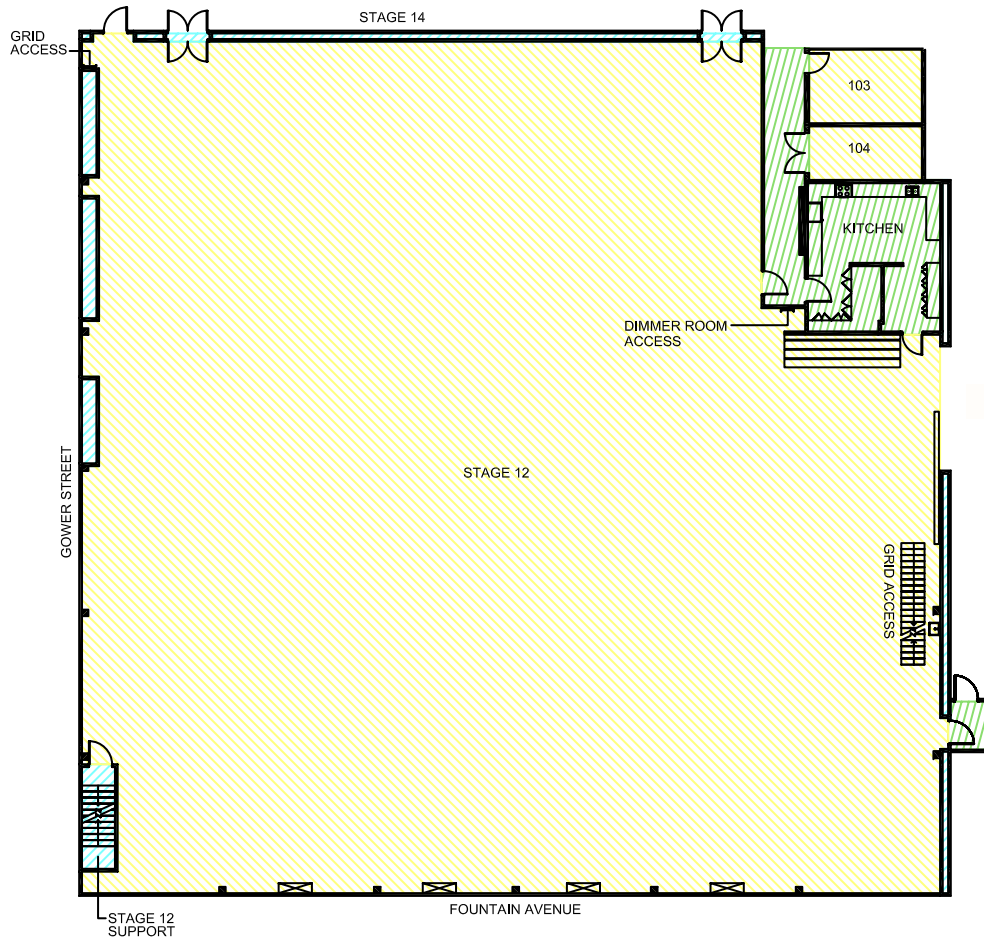
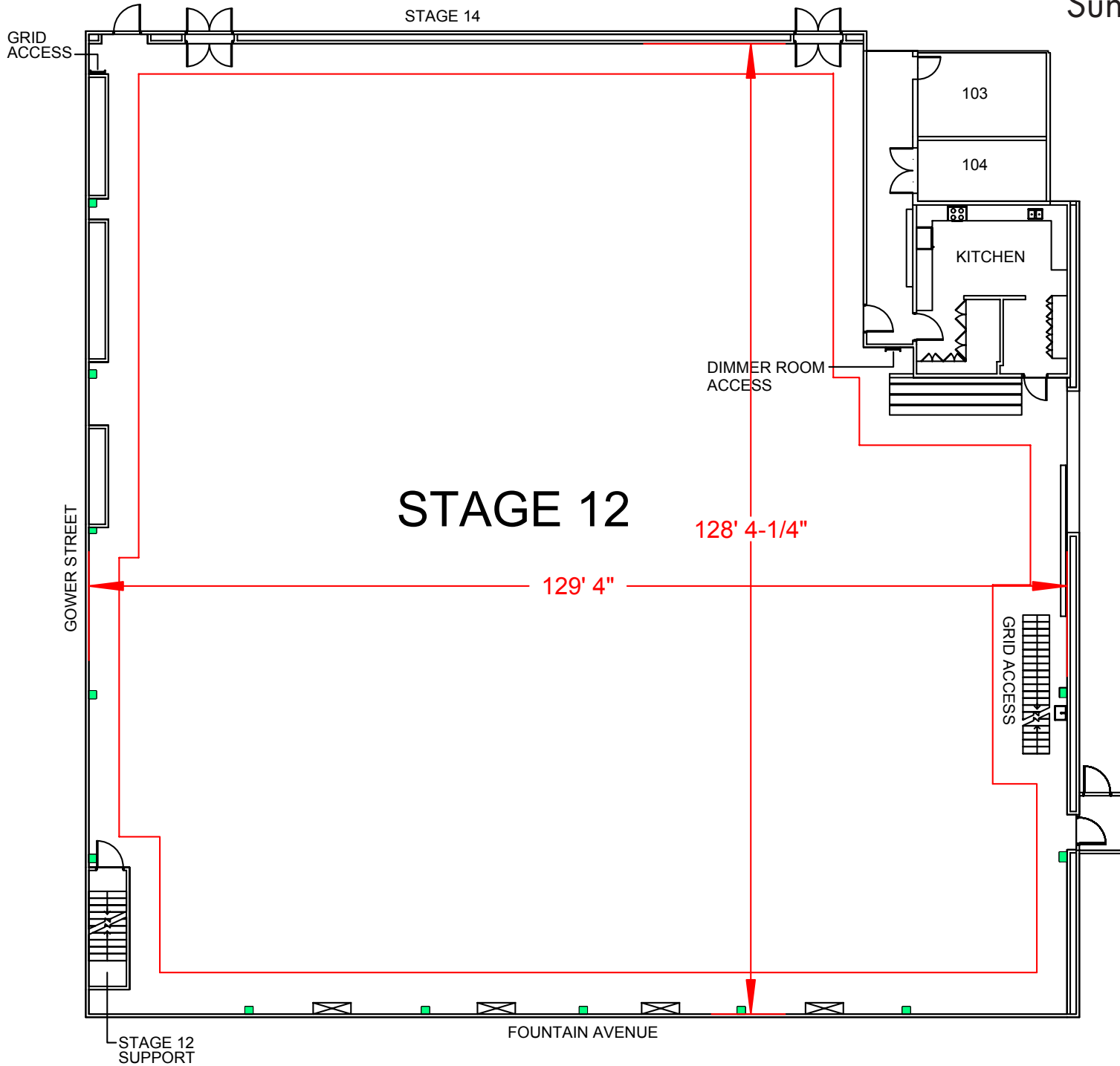


SUNSET GOWER STUDIOS

Stage 12



Width	Length	Height (Perms)	Total Stage Square Footage	Floor Type	Door (WxH)	Gross Weight Limit
129'4"	128'4"	35'3"	16,459	Wood	18'8" x 20'	10,000 Lbs.



Stage Specifications: Stage 12

Sunset Gower Studios

Stage Specifications - (Dimensions Include 4' Fire Lane)

Width – 129' 4"

Length – 128' 4"

Height (Perms) – 35' 3"

Total Square Footage – 16459

Floor Type – Wood

Elephant Door (W X H) – 18' 8" X 20'

Gross Weight Limits - 10,000 lbs (No Load)

NOTE Stage 12 connected to Stage 14 via two pass-thru standard double doors

Support Space- (Available On Stage)

Offices – 2

Kitchen on stage with fridge, stove.

Dressing Rooms, Wardrobe, and Hair + Make Up rooms are available in adjacent buildings

Heavy Equipment – (Authorized Lifts)

32' Scissor – 3246ES

30electric – lightweight JLG boom lift

3k forklift

Electric Service

Production Power - 120/208 800 Amp Per Phase Bus Bar, 4800 Amp Total Standard; Additional 2400 amp service available

240 Volts - No

480 Volts - No

Tech Power - Available

Power In Grid - Available

HVAC

HVAC- (3) 30 Ton Cooling / Heat Package Unit

Redlight Control - Yes

Ventilation - Yes

Heating - Yes

Stage Extras

Hose Bib - No

Gas - No

Drain - Yes

Compressed Air - No

Wireless Internet – Available

Phone – Available

Fax – Available