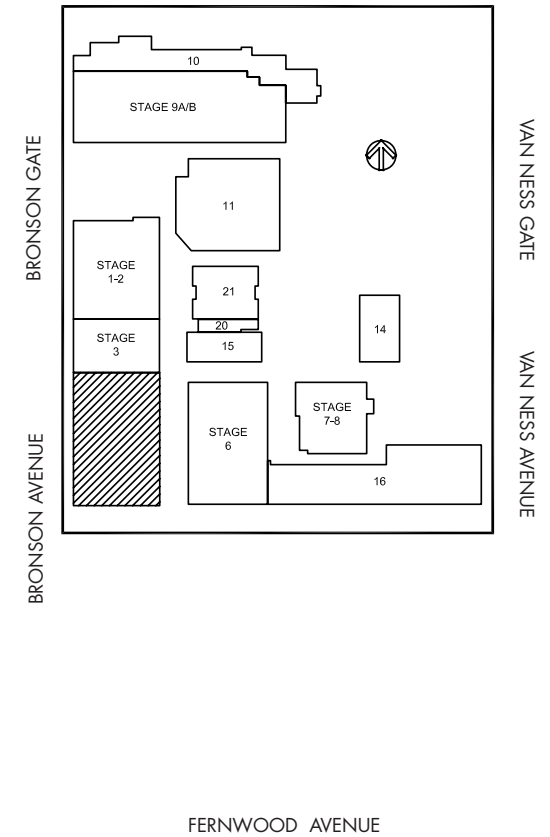
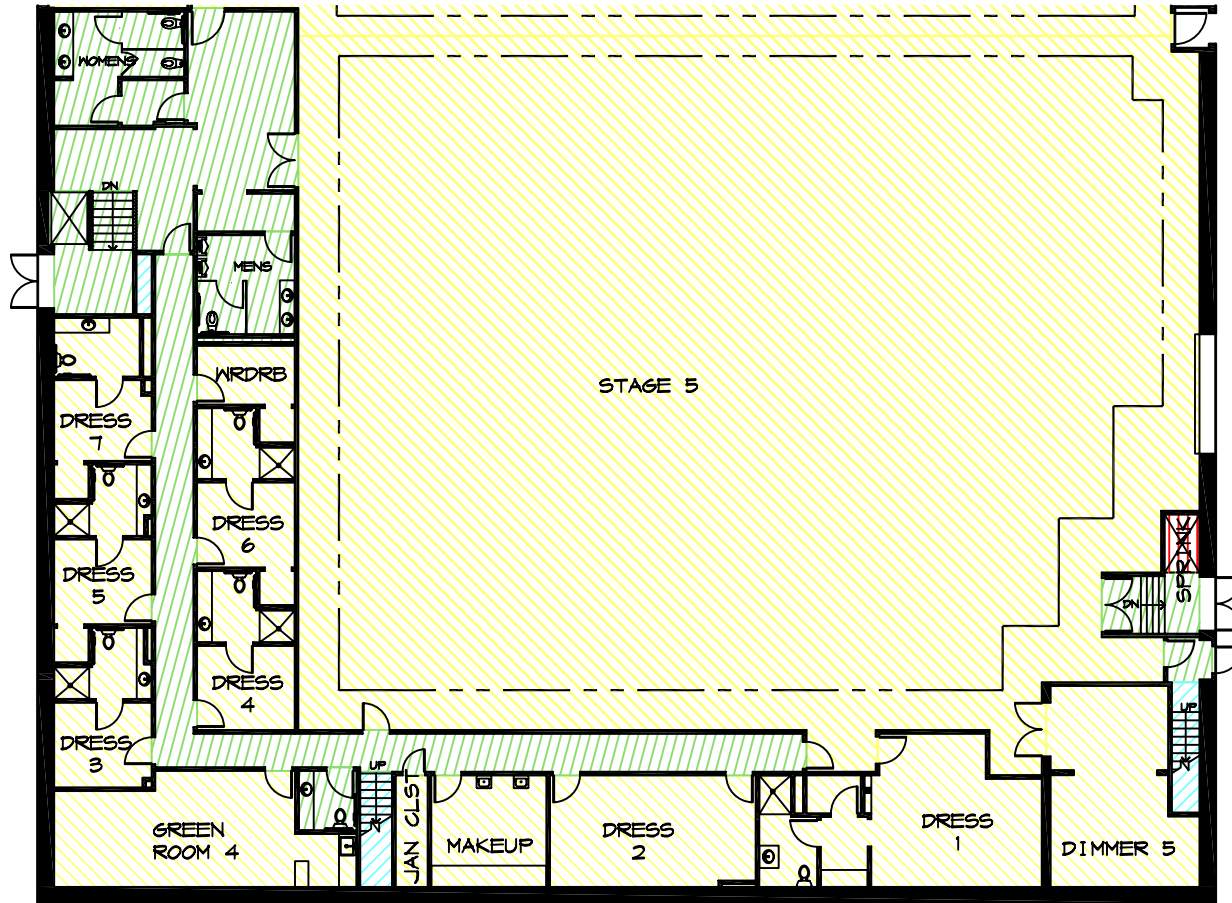


SUNSET BRONSON STUDIOS

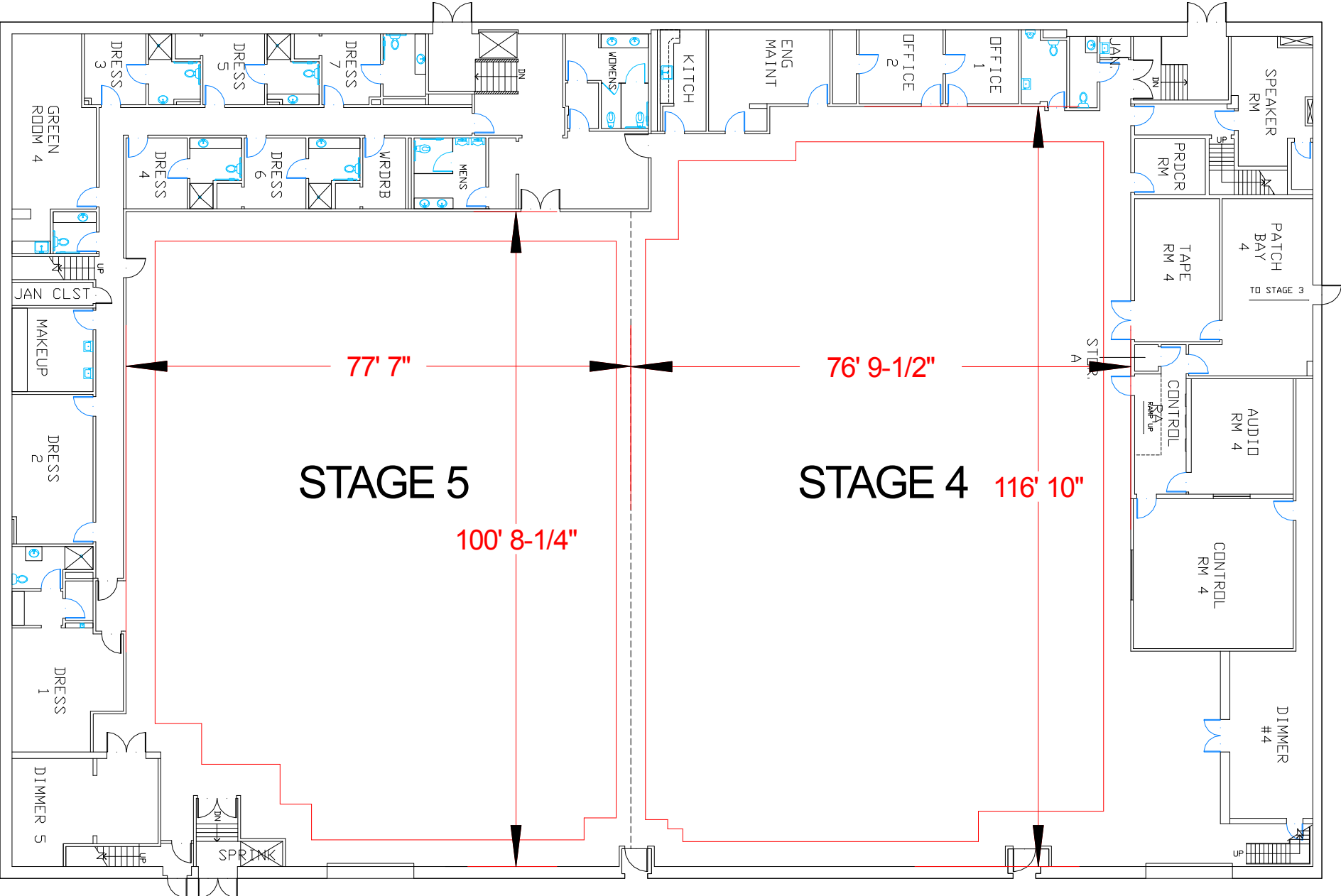
Stage 5

SUNSET BLVD



Width	Length	Height (Perms)	Total Stage Square Footage	Floor Type	Door (WxH)	Gross Weight Limit
77' 7"	100' 8 1/4"	30'	7,575	Wood	13' x 17'	8,000 Lbs.

Sunset Bronson Studios



Stage Specifications: Stage 5

Sunset Bronson Studios

Stage Specifications - (Dimensions Include 4' Fire Lane)

Width – 77' 7"

Length – 100' 8 1/4"

Height (Perms) – 30'

Total Square Footage – 7575 sf

Floor Type – Wood

Elephant Door (W X H) – 13' X 17'

Gross Weight Limits - 8,000 lbs (No Load)

Full Service Control Room Available On Stage

Support Space- (Available On Stage)

Offices - 1

Dressing Rooms - 8

Make Up Rooms - 1

Wardrobe - 1

Greenrooms – 2

Galley - 1

Heavy Equipment – (Authorized Lifts)

32' Scissor – 3246ES

30' Articulating Boom – E300AJP

Electric Service

Production Power - 120/208 800 Amp Per Phase Bus Bar, 2400 Amp Total Standard. Additional 7200 Amps Available

240 Volts - No

480 Volts - No

Tech Power - Available

Power In Grid - Available (Single Phase 120/208)

HVAC

HVAC- (4) 20 Ton (Nominal) Cooling Only Package Units.

Redlight Control - Yes

Ventilation - Yes

Heating – Yes

Stage Extras

Hose Bib - No

Gas - No; Compressed Air – No

Drain - No

Wireless Internet – Yes

Phone – Yes; Fax – No