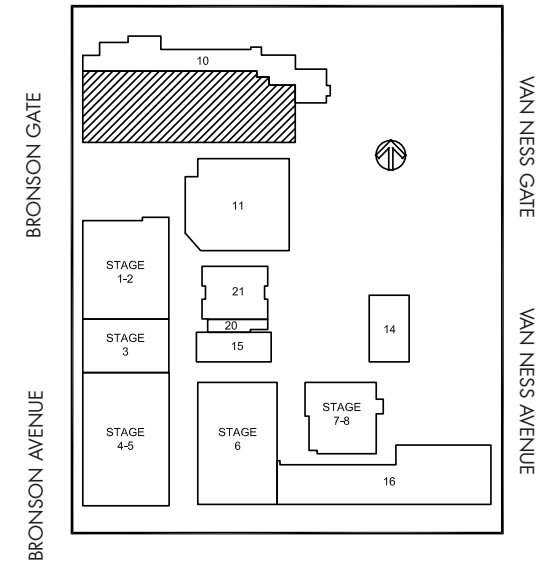
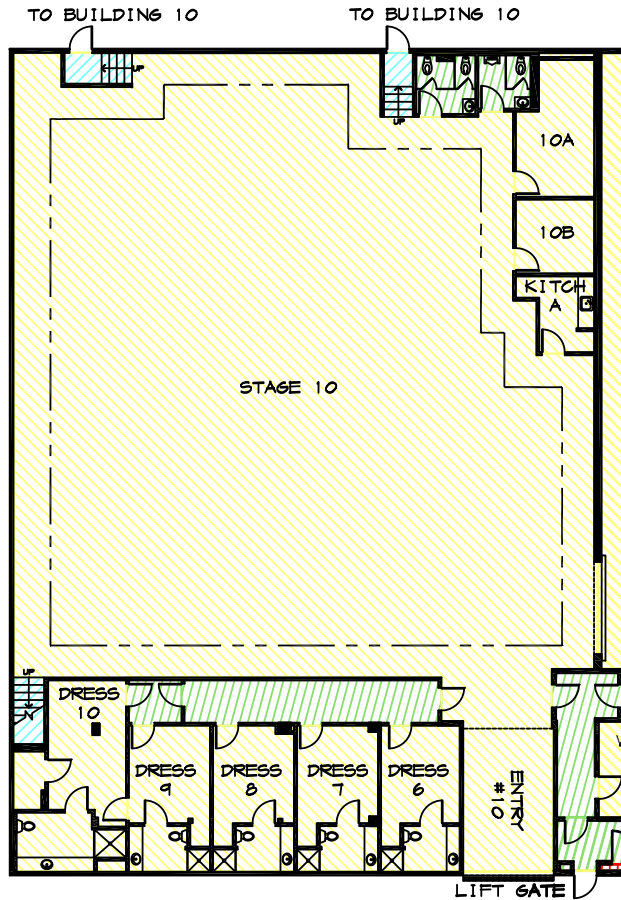


SUNSET BRONSON STUDIOS

Stage 10

SUNSET BLVD

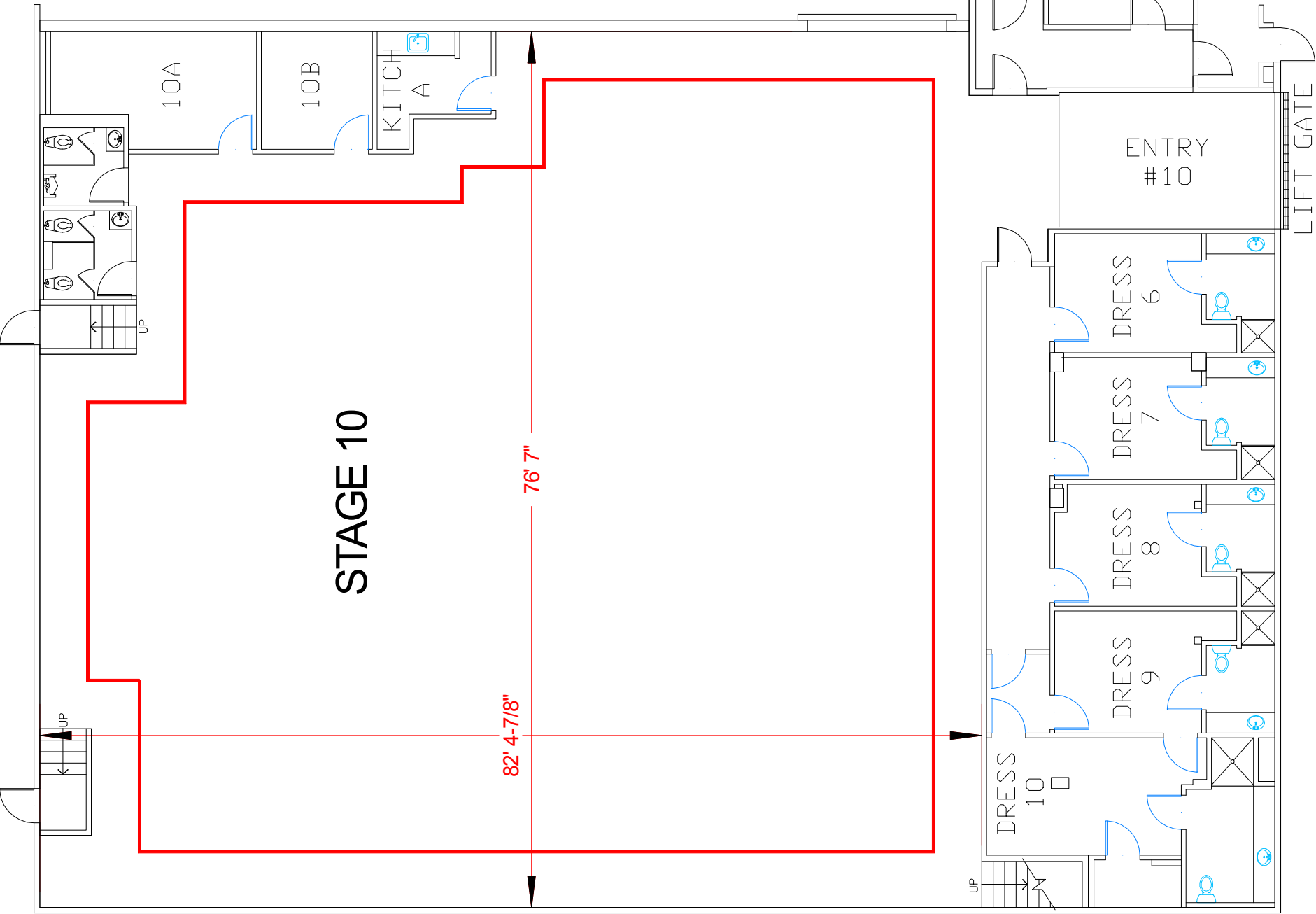


FERNWOOD AVENUE

| Width | Length | Height (Perms) | Total Stage Square Footage | Floor Type | Door (WxH) | Gross Weight Limit |
|-------|------------|----------------|----------------------------|------------|---------------|--------------------|
| 76'7" | 82' 4 7/8" | 29' | 5,600 | Wood | 11'4" x 14'1" | 15,000 Lbs. |

TO BUILDING 10

TO BUILDING 10



STAGE 10

10A

10B

KITCH
A

ENTRY
#10

LIFT GATE

DRESS
6

DRESS
7

DRESS
8

DRESS
9

DRESS
10

82' 4-7/8"

76' 7"

UP

UP

UP

Stage Specifications: Stage 10

Sunset Bronson Studios

Stage Specifications - (Dimensions Include 4' Fire Lane)

Width – 76'7"

Length – 82' 4 7/8"

Height (Perms) – 29'

Total Square Footage – 5600

Floor Type – Wood

Elephant Door (W X H) – 11' 4" X 14' 1"

Gross Weight Limits - 15,000 lbs (Plus 2,000 Load)

Support Space- (Available On Stage)

Offices – 0

Dressing Rooms – 5

Make Up Rooms – 1

Wardrobe – 0

Greenrooms – 1

Galley - 1

Heavy Equipment – (Authorized Lifts)

32' Scissor – 3246ES

30' Articulating Boom – E300AJP

40' Articulation Boom – E400AJP

Electric Service

Production Power - 120/208 800 Amp Per Phase Bus Bar, 2400 Amp Total Standard.

240 Volts - Accessible

480 Volts - No

Tech Power - Available

Power In Grid - No

HVAC

HVAC- (2) 40 Ton Chilled Water Air Handlers Adjustable For Sound

Redlight Control - Yes

Ventilation - No

Heating - No

Stage Extras

Hose Bib - No

Gas - No; Compressed Air - No

Drain - No

Wireless Internet – Yes

Phone – Yes; Fax – No